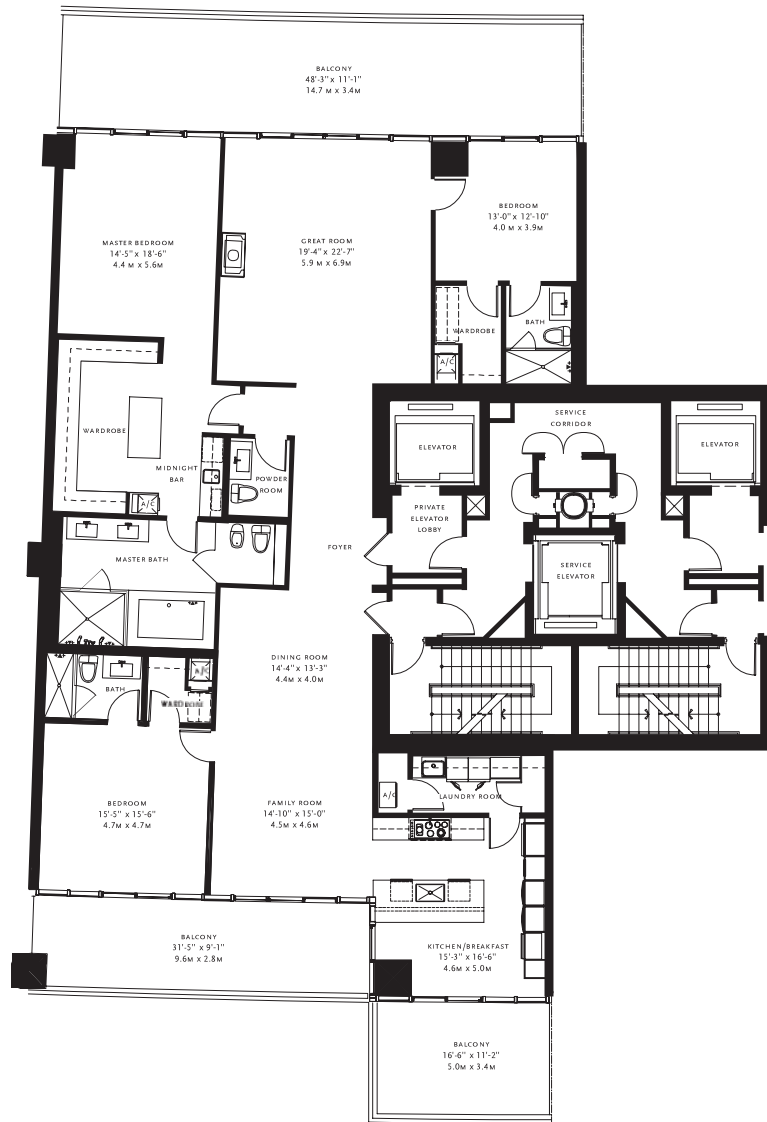
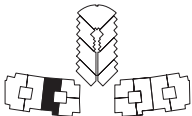


**NORTH RESIDENTIAL TOWER | RESIDENCE C MOD**  
 3 BEDROOMS & 3.5 BATHS

LIVING	3,133 SQ FT	291.1 M <sup>2</sup>
BALCONY	1,008 SQ FT	93.6 M <sup>2</sup>
<b>TOTAL</b>	<b>4,141 sq ft</b>	<b>384.7 M<sup>2</sup></b>



ATLANTIC OCEAN



LEVELS 4-11  
 COLLINS AVENUE



DEVELOPED BY AFFILIATES OF STARWOOD HOTELS RESORTS WORLDWIDE AND THE RELATED GROUP:  
 A PARTNERSHIP OF EXCELLENCE OFFERED EXCLUSIVELY BY RELATED CERVERA REALTY SERVICES.

ORAL REPRESENTATIONS CANNOT BE RELIED UPON AS CORRECTLY STATING THE REPRESENTATION OF THE DEVELOPER. FOR CORRECT REPRESENTATIONS, REFERENCE SHOULD BE MADE TO THE DOCUMENTS REQUIRED BY SECTION 718.503, FLORIDA STATUTES. TO BE FURNISHED BY A DEVELOPER TO A BUYER OR LESSEE. THIS OFFERING IS MADE ONLY BY THE PROSPECTUS FOR THE CONDOMINIUM AND NO STATEMENT SHOULD BE RELIED UPON IF NOT MADE IN THE PROSPECTUS. THIS IS NOT AN OFFER TO SELL OR SOLICITATION OF OFFERS TO BUY THE CONDOMINIUM UNITS IN STATES WHERE SUCH OFFER OR SOLICITATION CANNOT BE MADE. PRICES, FEATURES AND SPECIFICATIONS SUBJECT TO CHANGE WITHOUT NOTICE. NOT AN OFFERING WHERE PROHIBITED BY STATE LAW. THE COMPLETE OFFERING TERMS ARE AVAILABLE IN AN OFFERING PLAN AVAILABLE FROM THE SPONSOR. DEVELOPER USE OF THE ST. REGIS