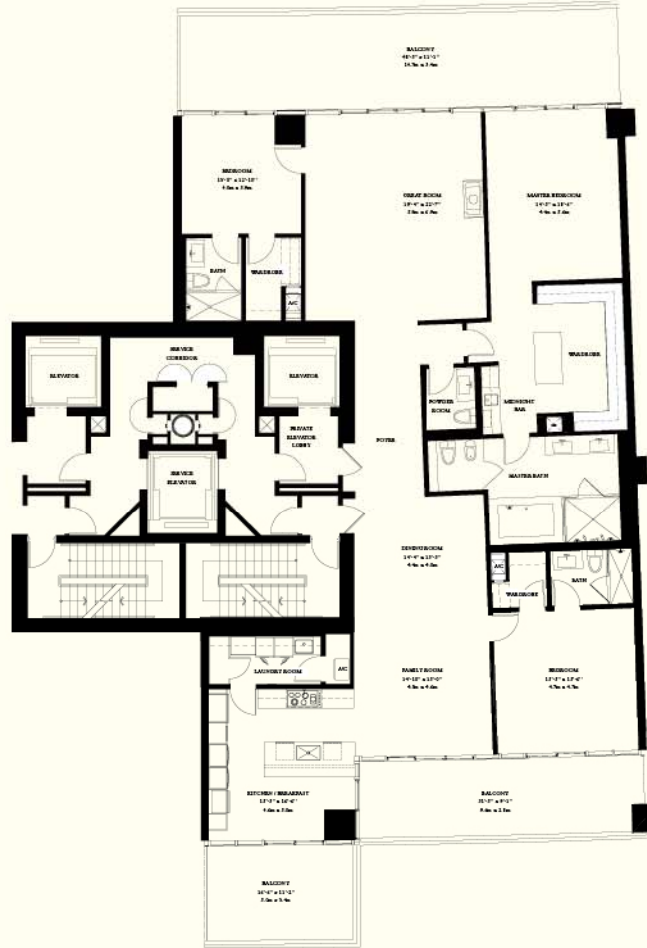


NORTH RESIDENTIAL TOWER RESIDENCE B MOD

3 bedrooms & 3.5 baths

LIVING	3,133 SQ FT	291.1 M ²
BALCONY	1,008 SQ FT	93.6 M ²
TOTAL*	4,141 SQ FT	384.7 M ²



* Approximate Square Footage. All floor plans and development plans are subject to change. Please refer to the last page of this book for more information.