

Capri

SOUTH BEACH

# Capri

SOUTH BEACH

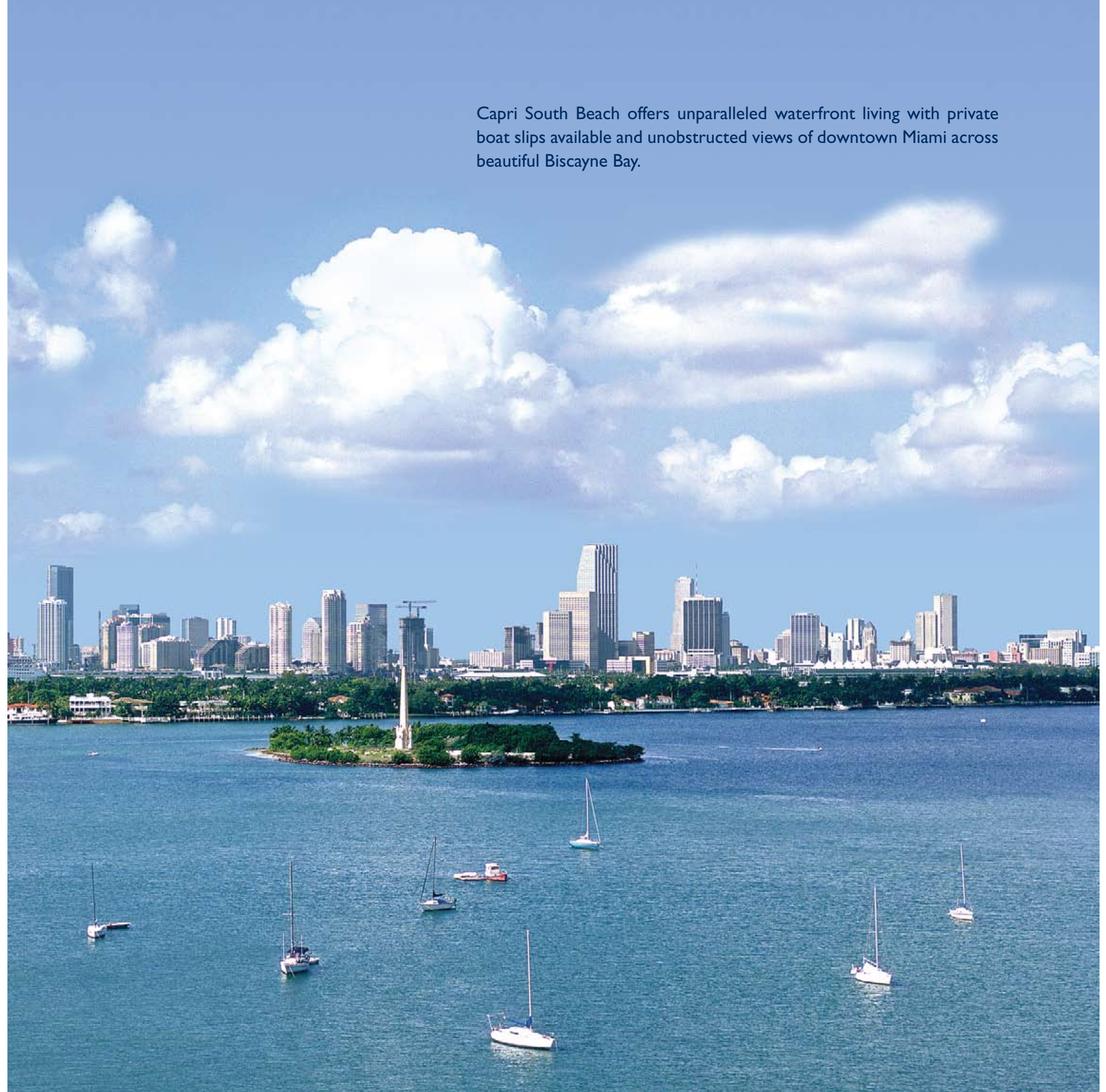
Set on nearly two acres of prime waterfront real estate, Capri South Beach comprises three modernist structures boasting sixty-nine exquisite residences.



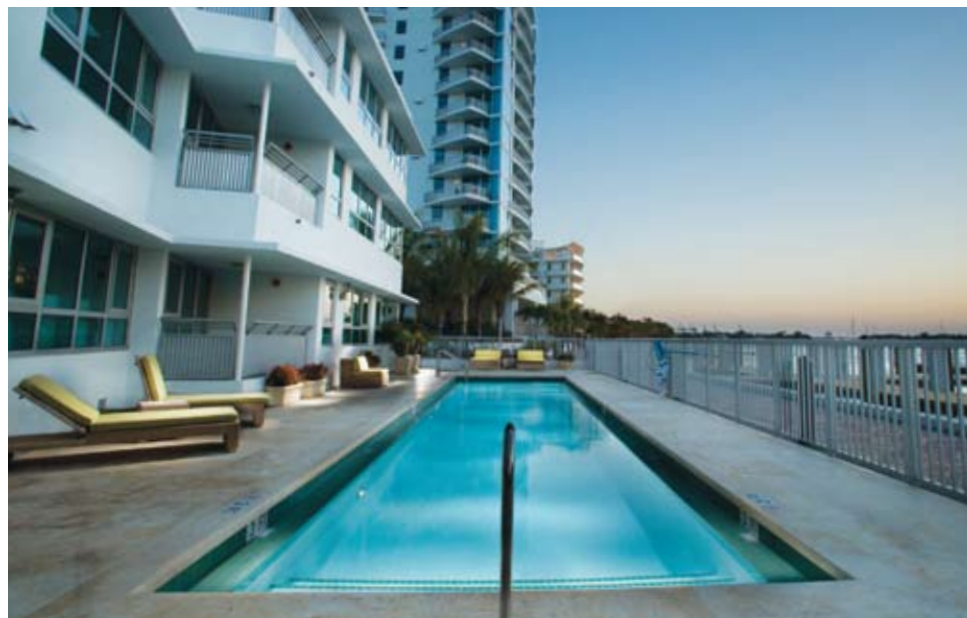




Capri South Beach offers unparalleled waterfront living with private boat slips available and unobstructed views of downtown Miami across beautiful Biscayne Bay.











Every fully finished residence has been designed to reflect the tastes and needs of a contemporary lifestyle.





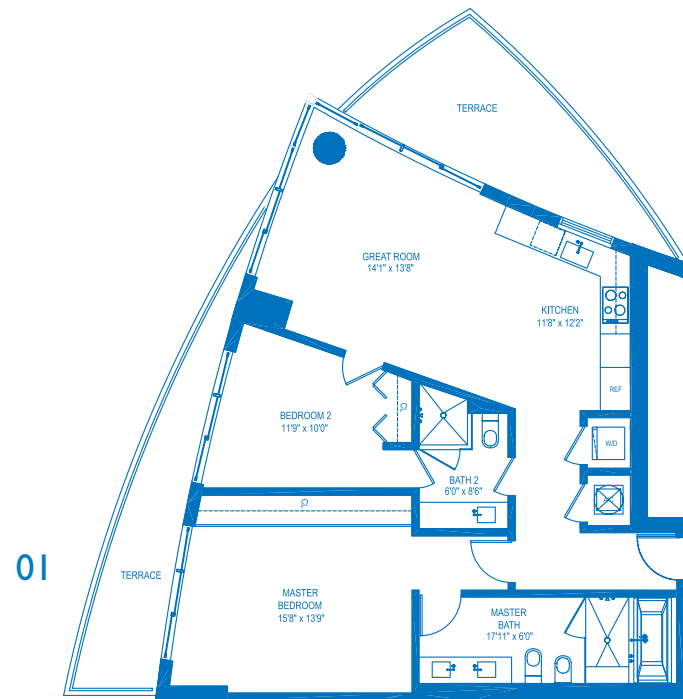
Indulgent details, fine modern finishes and top of the line appliances.



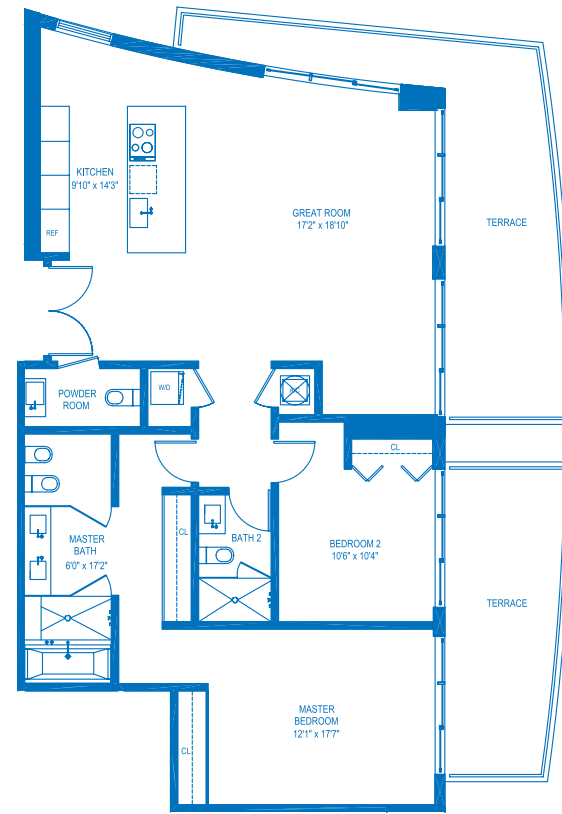




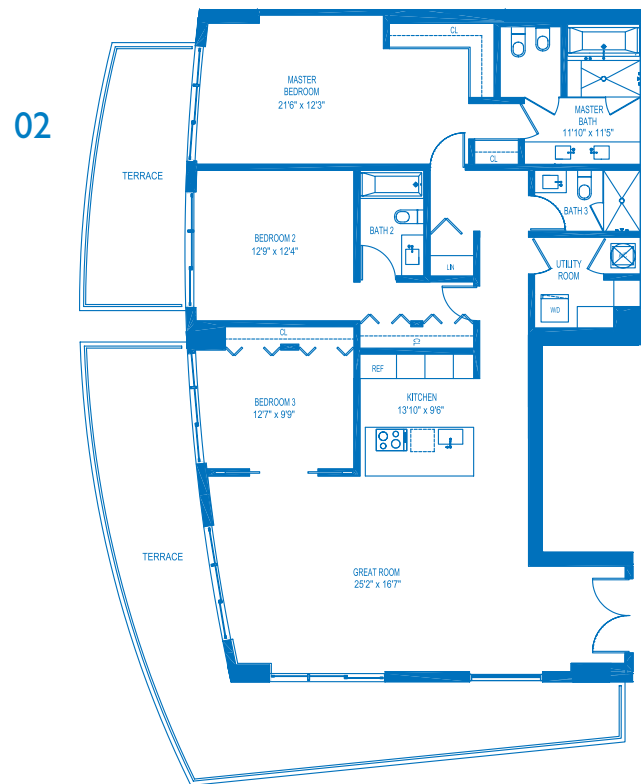
Residences feature spectacular views of Biscayne Bay or Miami Beach.



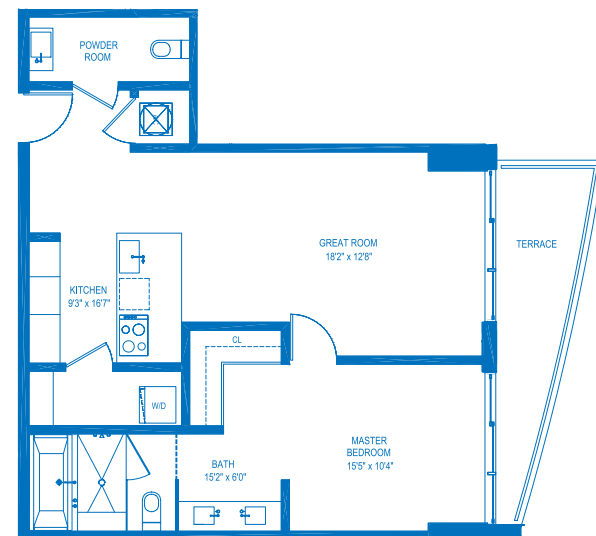
01



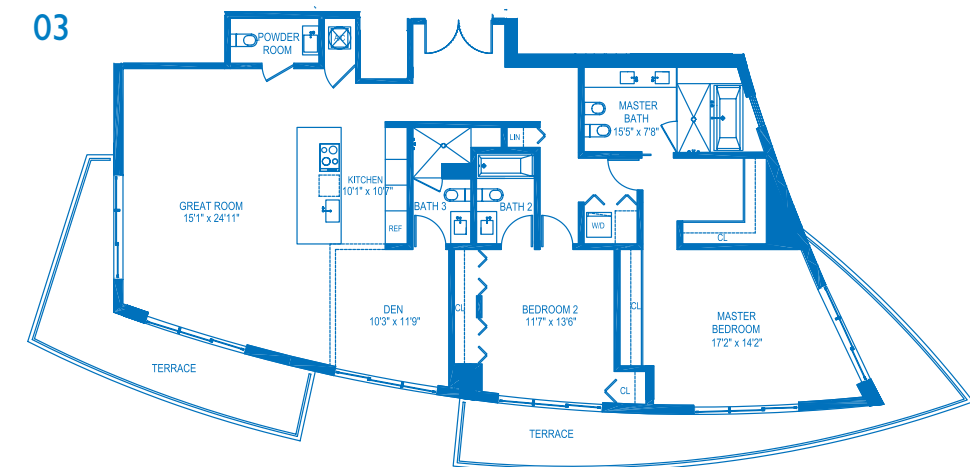
05



02



04



03

Residence 01  
 2 Bedroom, 2 Bath  
 Interior 1,128 sq.ft. (105 m<sup>2</sup>)  
 Exterior 188-264 sq.ft. (17-25 m<sup>2</sup>)  
 Total 1,207-1,283 sq.ft. (112-119 m<sup>2</sup>)

Residence 02  
 3 Bedroom, 3 Baths  
 Interior 1,842 sq.ft. (171 m<sup>2</sup>)  
 Exterior 637-662 sq.ft. (59-62 m<sup>2</sup>)  
 Total 2,345-2,370 sq.ft. (218-220 m<sup>2</sup>)

Residence 03  
 2 Bedrooms plus Den, 3.5 Baths  
 Interior 1,919 sq.ft. (178 m<sup>2</sup>)  
 Exterior 458 sq.ft. (43 m<sup>2</sup>)  
 Total 2,209 sq.ft. (205 m<sup>2</sup>)

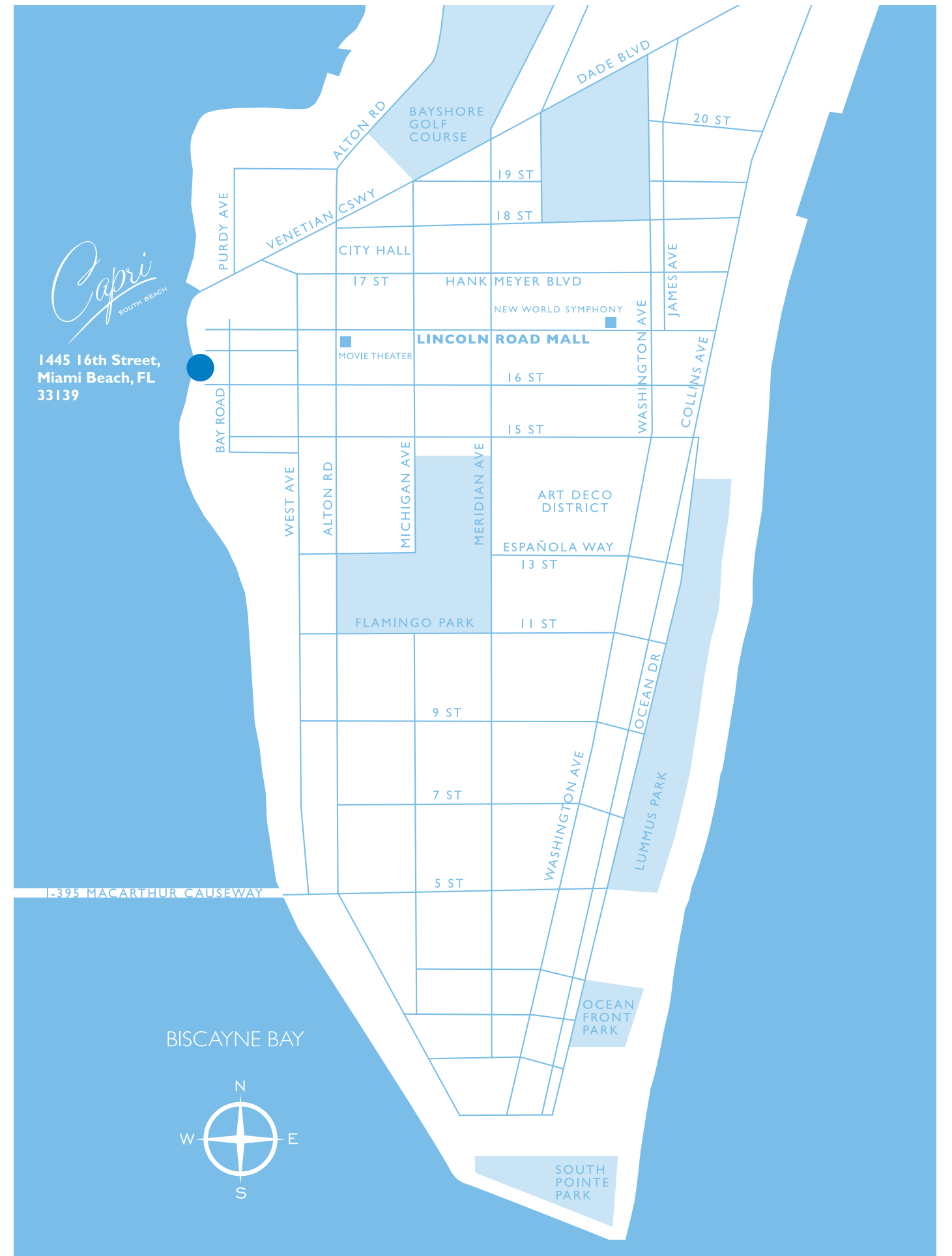
Residence 04  
 1 Bedroom, 1.5 Baths  
 Interior 783 sq.ft. (73 m<sup>2</sup>)  
 Exterior 99 sq.ft. (9 m<sup>2</sup>)  
 Total 811 sq.ft. (75 m<sup>2</sup>)

Residence 05  
 2 Bedrooms 2.5 Baths  
 Interior 1,396 sq.ft. (130 m<sup>2</sup>)  
 Exterior 421-483 sq.ft. (39-45 m<sup>2</sup>)  
 Total 1,719-1,781 sq.ft. (160-165 m<sup>2</sup>)





World-renowned beaches, restaurants, fine boutique shops and the Art Deco Historic District are all within walking distance.



*Capri*  
SOUTH BEACH  
1445 16th Street,  
Miami Beach, FL  
33139





For more information about the unique residential opportunities at Capri South Beach, please contact our on-site sales center at 305 535 8175

*Capri*  
SOUTH BEACH

1445 16th Street, South Beach FL 33139  
fax 305 531 0217 | [caprisobe.com](http://caprisobe.com)



Oral representations cannot be relied upon as correctly stating representations of the developer. For correct representations, reference should be made to the documents required by section 718.503, Florida Statutes, to be furnished by the developer to a buyer or lessee. Not an offer where prohibited by state statutes.



Capri  
SOUTH BEACH

[caprisobe.com](http://caprisobe.com)