

## B2

1 BEDROOM / 1 BATHROOM

Interior Space	761 ft <sup>2</sup> / 71 m <sup>2</sup>
Balcony Space	170 ft <sup>2</sup> / 16 m <sup>2</sup>

### Residence Features

- Panoramic bay and/or city views
- Extra large 6' deep balconies with glass railings
- Walk-in closet in master bedroom
- High 9' plus ceilings
- Open living-dining/great room layout
- Energy-efficient tinted windows and sliding glass doors
- High-efficiency air-conditioning and heating units

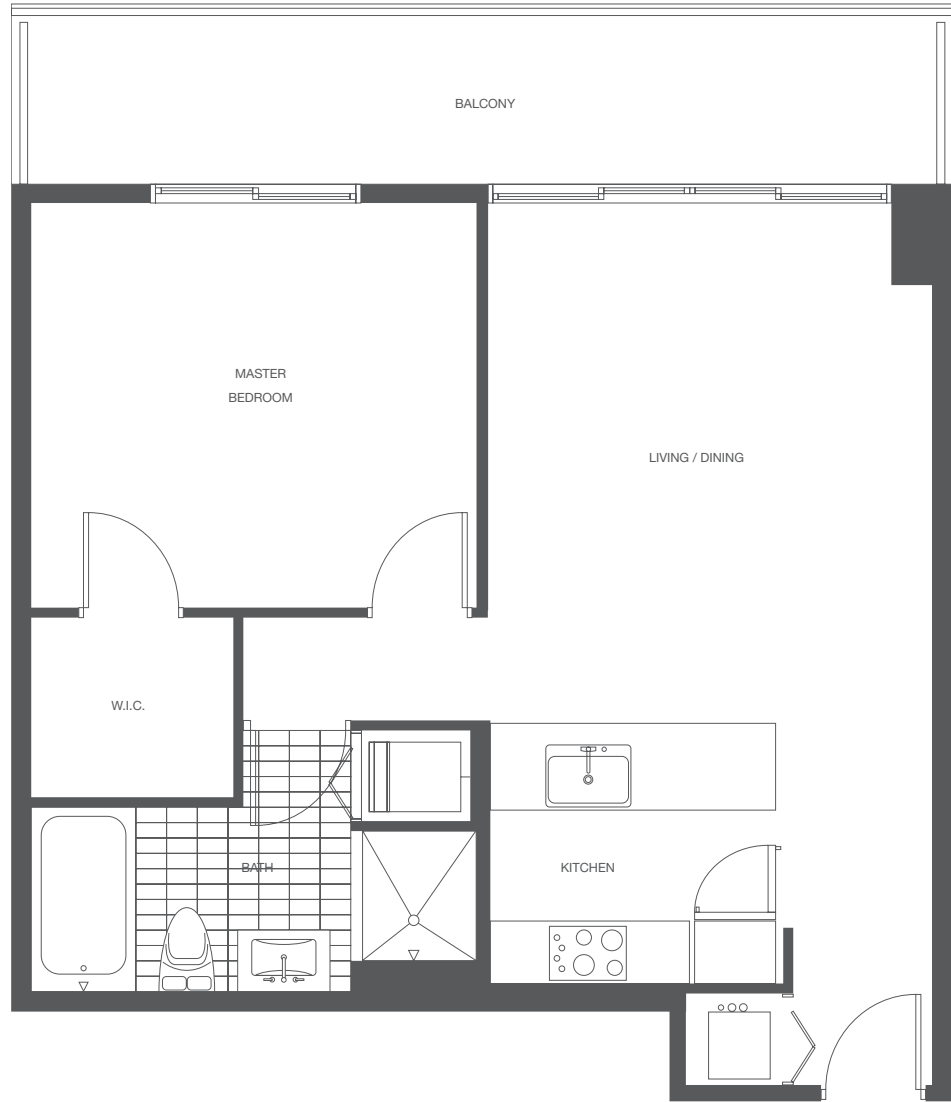
#### NORTH TOWER



D	B1	C1	C1	B1	D
25	24	23	22	21	20
14	15	16	17	18	19
D	B2	C2	C3	B2	D

D	B2	C2	C3	B2	D
12	11	10	09	08	07
01	02	03	04	05	06
D	B1	C1	C1	B1	D

#### SOUTH TOWER



ORAL REPRESENTATIONS CANNOT BE RELIED UPON AS CORRECTLY STATING REPRESENTATIONS OF THE DEVELOPER. FOR CORRECT REPRESENTATIONS, MAKE REFERENCE TO THIS BROCHURE AND TO THE DOCUMENTS REQUIRED BY SECTION 718.503, FLORIDA STATUTES TO BE FURNISHED BY A DEVELOPER TO A BUYER OR LESSEE.



This offering is made only by the prospectus for the condominium and no statement should be relied upon if not made in the prospectus. This is not an offer to sell or solicitation of offers to buy the condominium units in states where such offer or solicitation cannot be made. Prices, features, and specifications subject to change without notice.

Dimensions and square footage calculations are approximations only and are based upon architectural measurements which, among other things, measure the Units from the exterior of all perimeter walls (excluding balconies) except for those between two adjacent Units which are measured from the wall's midpoint. As a result, the Developer does not represent or warrant that the actual dimensions and square footage of the Units will be as reflected on floor plans and other promotional materials. This brochure and other marketing materials may use calculations for the square footage of Units in a manner different from that set forth in the Declaration of Condominium, which generally includes only the interior air space between interior unfinished surfaces of the walls bounding the Units.